

Table of Contents

- Enlightenment and Spotify** 3
- Install spotify 3
- Fn Keys 3
- References 5

Enlightenment and Spotify

Install spotify

Follow the steps of official web page... please go back after that:

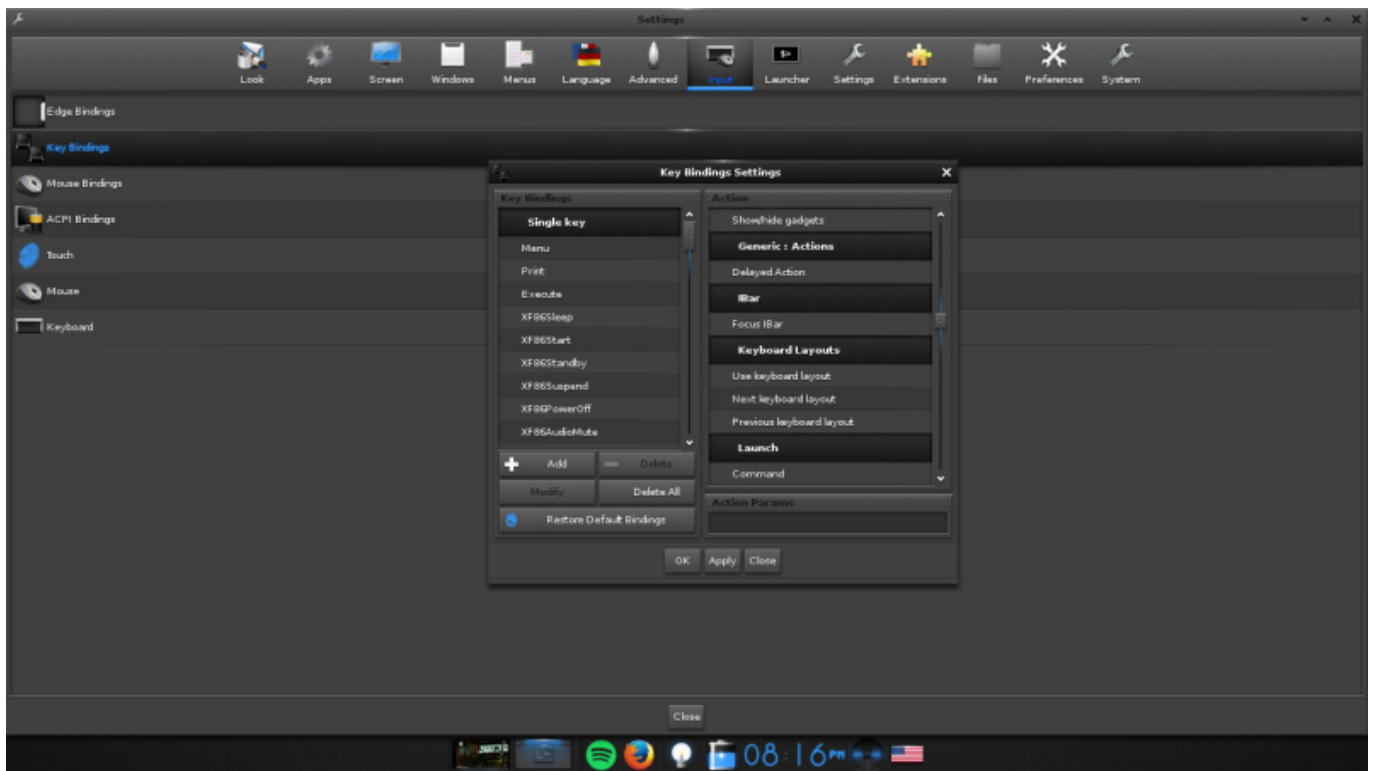
- <https://www.spotify.com/es/download/linux/>

Fn Keys

I am wondering that Spotify supports MPRIS... with this you can play/pause/stop music and next or forward songs... without entering to the GUI, for example with Fn Keys.

Enlightenment have a way to add it very easy... I will post screenshots of how you can do it:

Go to Settings Panel → Input → Key Bindings

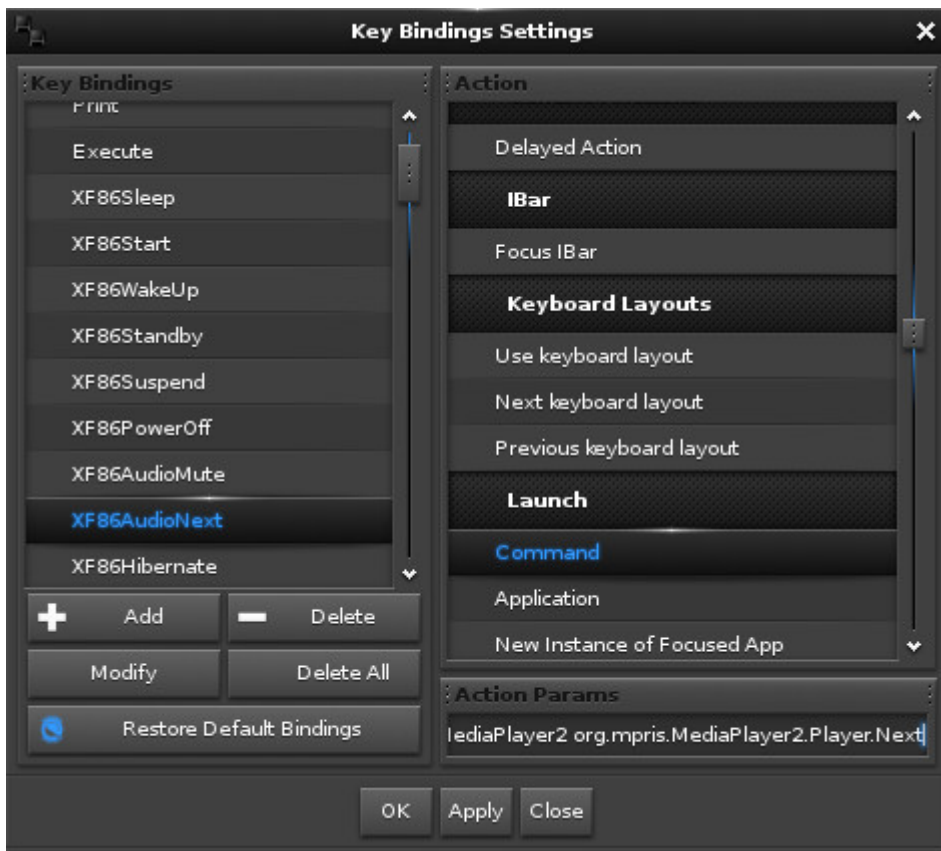


Click on Add, press Fn+“>|” keys. You will see a new option “XF86AudioNext”. Select in “Action” Launch→ Command.

Write in Action Params:

```
dbus-send --print-reply --dest=org.mpris.MediaPlayer2.spotify /org/mpris/MediaPlayer2 org.mpris.MediaPlayer2.Player.Next
```

You must have something similar to this:



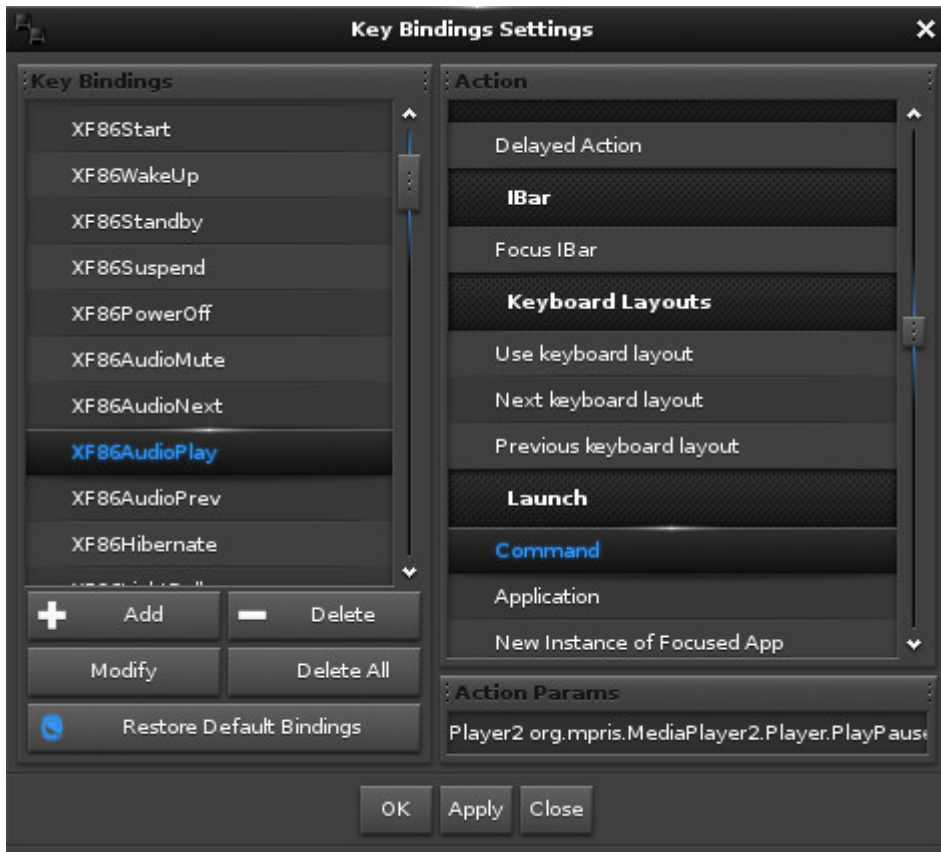
Repeat the process with: Fn+“|<” XF86AudioPrev and write:

```
dbus-send --print-reply --dest=org.mpris.MediaPlayer2.spotify /org/mpris/MediaPlayer2 org.mpris.MediaPlayer2.Player.Previous
```

And Fn+“>|” XF86AudioPlay and write:

```
dbus-send --print-reply --dest=org.mpris.MediaPlayer2.spotify /org/mpris/MediaPlayer2 org.mpris.MediaPlayer2.Player.PlayPause
```

Finally this is my result:



References

- <https://wiki.archlinux.org/index.php/spotify>

From: <https://www.estebanmonge.site/> - **Esteban Monge**

Permanent link: <https://www.estebanmonge.site/doku.php?id=spotify>

Last update: **2016/05/03 16:51**

